

# SFBA 2/1

DoubleFoil / Single Bubble

## SuperFOIL

Thermal Insulation for use in Roofs, Walls, Floors & Partition Walls

Floors

SFBA 2/1  
SuperFOIL

Roofs

Easy to Install

CFC/HCFC free

Reduces noise pollution

Water & vapour resistant

Fully recyclable

Resistant to corrosion

Suitable for new build, refurb or renovation projects

Timber Framed Walls

Block Walls

SFBA 2/1  
SuperFOIL

Quality System Manufactured to:

ISO 9001:2000

BOC



5 060190 230071

SFBA Single Bubble, Double Foil  
Single Roll x 2.410m x 18.00m

# SFBA 2/1

DoubleFoil / Single Bubble

## SuperFOIL

INDEPENDENTLY  
TESTED &  
CERTIFIED TO  
**ISO**  
STANDARDS

### Thermal Insulation for use in Roofs, Walls, Floors & Partition Walls

- **SFBA** is one of the Superfoil range of products designed to maximize insulation performance with quick and easy installation
- **SFBA** is a multi-layer air bubble insulation with aluminium bonded to both surfaces. The aluminium faces are coated to give durability and protection against corrosion to give a waterproof insulation system
- **SFBA** is the UK's leading bubble foil insulation. It can be used for insulating under floors, in walls, in dry linings such as for cellars and can also be used in greenhouses and other industrial applications.
- **SFBA** is a high performance insulation which utilizes low emissivity air gaps to maximize the thermal capabilities
- **SFBA** reflects radiant heat, just like a mirror reflects light. SFBA is an ideal radiant barrier for supplementing existing insulation. Keeps your house warmer in winter and cooler in summer.
- **SFBA** boosts existing insulation values by the equivalent of 55mm polystyrene in 1 thin layer
- **SFBA** enhances U - value in traditional cavity wall construction to meet and/or exceed current Building Regulations (achieve a U - value of 0.27)\*
- **SFBA** sales & technical support, data and installation guides available by calling 01636 639 900

We are so confident of our product that we will send you a sample of our competitors material for you to compare to **SFBA 2/1** Superfoil Insulation

		Roll Size	Thickness
Floors/Roofs/Walls/Lofts	<b>SFBA 2/1</b> Double Foil / Single Bubble	19m x 0.6m	4mm
Floors/Roofs/Walls/Lofts	<b>SFBA 2/1</b> Double Foil / Single Bubble	38m x 1.2m	4mm

For more information visit [www.vistaire.plc.uk](http://www.vistaire.plc.uk)  
Available from your local distributor

# SFBA 2/2

DoubleFoil / Double Bubble

## SuperFOIL

Thermal Insulation for use in Roofs, Walls, Floors & Partition Walls

Floors

Roofs

SFBA 2/2  
SuperFOIL

Easy to Install

CFC/HCFC free

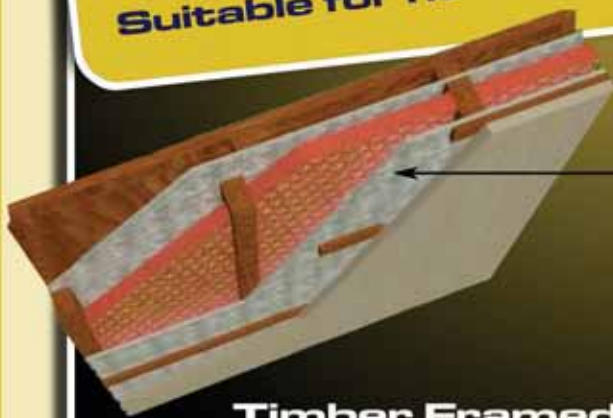
Reduces noise pollution

Water & vapour resistant

Fully recyclable

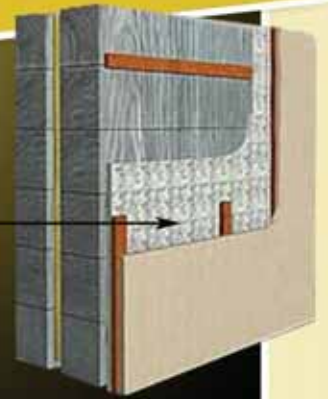
Resistant to corrosion

Suitable for new build, refurb or renovation projects



Timber Framed Walls

SFBA 2/2  
SuperFOIL



Block Walls

Quality System Manufactured to:

ISO 9001:2000

BOC



5 060190 230088

SFBA Single Bubble, Double Foil  
Single Roll x 1.22m x 38.1m

# SFBA 2/2

DoubleFoil / Double Bubble

INDEPENDENTLY  
TESTED &  
CERTIFIED TO  
**ISO**  
STANDARDS

## SuperFOIL

**Thermal Insulation for use in Roofs, Walls, Floors & Partition Walls**

- **SFBA** is one of the Superfoil range of products designed to maximize insulation performance with quick and easy installation
- **SFBA** is a multi-layer foil air bubble insulation with aluminium bonded to both surfaces. The aluminium faces are coated to give durability and protection against corrosion to give a waterproof insulation system
- **SFBA** is the UK's leading bubble foil insulation. It can be used for insulating under floors, in walls, in dry linings such as for cellars and can also be used in greenhouses and other industrial applications.
- **SFBA** is a high performance insulation which utilizes low emissivity air gaps to maximize the thermal capabilities
- **SFBA** reflects radiant heat, just like a mirror reflects light. SFBA is an ideal radiant barrier for supplementing existing insulation. Keeps your house warmer in winter and cooler in summer.
- **SFBA** boosts existing insulation values by the equivalent of 55mm polystyrene in 1 thin layer
- **SFBA** enhances U - value in traditional cavity wall construction to meet and/or exceed current Building Regulations (achieve a U - value of 0.27)
- **SFBA** sales & technical support, data and installation guides available by calling 01636 639 900

We are so confident of our product that we will send you a sample of our product and our competitors for you to compare to **SFBA 2/2** Superfoil Insulation

		Roll Size	Thickness
Floors/Roofs/Walls/Lofts	<b>SFBA 2/2</b> Double Foil / Double Bubble	7.94m x 0.6m	6mm
Floors/Roofs/Walls/Lofts	<b>SFBA 2/2</b> DoubleFoil/Double Bubble	38m x 1.2m	6mm