



Celotex CF5000 Premium Full Fill Cavity Wall Insulation Board

Celotex
SAINT-GOBAIN

Introduction

Celotex CF5000 is our premium performance PIR solution specifically designed for use within full fill cavity wall applications. Celotex is the brand leading manufacturer of PIR insulation boards and CF5000 is the latest addition to the '5000' series and cavity wall range. CF5000 helps you simplify compliance to UK Building Regulations by achieving a U-value of 0.18 W/m²K, maximising thermal performance without widening the cavity.

BBA certified, Celotex CF5000 features a mechanically engineered edge profile, eliminating the passage of moisture and allowing you to focus on achieving enhanced building performance

With Celotex CF5000 you are specifying an insulation board that:

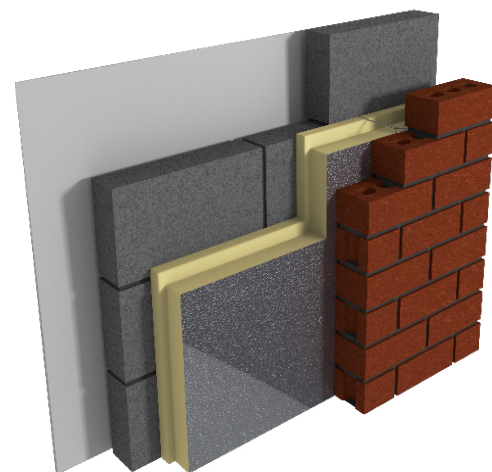
- Is certified under BBA certificate number 94/3080
- Has a thermal conductivity of 0.021W/mK offering enhanced thermal performance and even better U-values
- Achieves an A+ rating when compared to the BRE Green Guide
- Has class O fire performance throughout the entire product
- Makes installation easy with dimensions to fit with standard cavity wall tie spacing. Foil facings on either side make CF5000 easy to cut
- Minimises heat loss through gaps with a mechanically engineered rebated edge

Applications

Celotex CF5000 is specifically for use within full fill cavity wall applications

Specification Clause

The insulation shall be Celotex CF5000 97mm thick suitable for 100mm cavities. CF5000 comprises a polyisocyanurate rigid foam insulation core featuring textured aluminium foil facings on both sides and Class O fire performance throughout the product in accordance with BS 476. CF5000 is A+ rated when compared to the BRE Green Guide 2008 and is CFC/HCFC free with low GWP and zero ODP and CE marking compliance to BS EN 13165. CF5000 has been mechanically engineered with a rebated edge, tightly interlocking during installation to resist the passage of moisture across the cavity. CF5000 is manufactured in accordance with quality management systems ISO 9001 and environmental management system ISO 14001. All products must be installed in accordance with instructions issued by Celotex Limited.



Celotex CF5000 in a masonry wall application

Sustainable Insulation

Celotex PIR insulation has been independently assessed by BRE Global and has been accredited with an A+ rating when compared to the BRE Green Guide.

The results also show that Celotex offers a lower environmental impact than other typical PIR manufacturers.

For further information about Celotex' sustainable insulation solutions, visit the sustainability pages of the website at celotex.co.uk

cont...



Celotex CF5000

Premium Full Fill Cavity Wall Insulation Board

Celotex
SAINT-GOBAIN

Celotex CF5000 Technical Data

Product Code	Thickness (mm)	R-value (m ² K/W)	Weight (kg/m ²)
CF5097	97	4.60	3.25

Physical Properties

	Method	CF5000
Compressive strength	BS EN 826	≥120kPa
Dimensional stability	BS EN 1604	DS (70, 90)3, DS (-20,-)4
Water vapour resistance	BS EN 12086: Method B	>150 MNs/g
Thermal conductivity	BS EN 12667	0.021 W/mK
Fire propagation	BS 476: Part 6	Pass
Surface spread of flame	BS 476: Part 7	Class 1

Typical U-values

Product Code	Dense (1.13 W/mK)	Medium Dense (0.59 W/mK)	Lightweight Concrete (0.25 W/mK)	Aircrete (0.15 W/mK)
Brickwork outer (build up 1)	0.19	0.19	0.18	0.18
Blockwork outer (build up 2)	0.19	0.19	0.18	0.18

Build up 1: Brickwork outer leaf / Celotex CF5000 / Blockwork inner leaf / Plasterboard on dabs + 3mm skim

Build up 2: Render / Blockwork outer leaf / Celotex CF5000 / Blockwork inner leaf / Plasterboard on dabs + 3mm skim

These are example calculations using the structural framework above. U-values will vary depending on application. To calculate a specific U-value, please visit our online U-value calculator at celotex.co.uk

Installation Guidelines

For full details of the installation of Celotex CF5000, please refer to the 'application' pages of the website at celotex.co.uk*

Further Information

If you wish to contact Celotex, please visit celotex.co.uk and click on the 'contact us' page.

For information regarding [storage](#), [installation and handling](#) of Celotex products, or for Health & Safety advice, please refer to the 'literature' pages of the website at celotex.co.uk.

Celotex has a policy of continuous product development and reserves the right to alter product designs or specifications without prior notice.

Celotex Limited
Lady Lane Industrial Estate,
Hadleigh, Ipswich
Suffolk IP7 6BA

T: 01473 820850
W: celotex.co.uk