

# SF19 SuperFOIL Insulation

Thermal Insulation for use  
in Roofs and Walls



- Easy Installation

- Lightweight & Flexible

- Use to Reach CSH levels 3 to 6

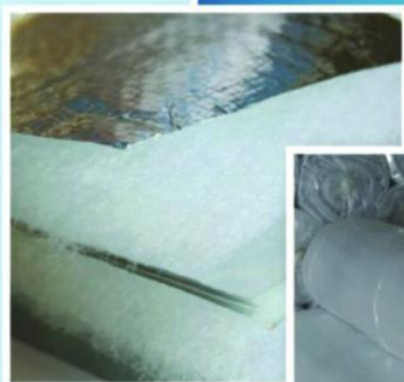
- Certified to comply with BR443 Part L of Building Regulations

- Certified Conventional 'Hot Box' Test completed by Accredited Laboratories with Certified R Value=2.218

- Independently Tested

- Fast Installation

- Over or Under Rafter Compatible



Quality System Manufactured to:  
**ISO 9001:2008**

# SF19 SuperFOIL Insulation

**Thermal Insulation for use  
in Roofs and Walls**

**INDEPENDENTLY  
TESTED &  
CERTIFIED TO  
INTERNATIONAL  
STANDARDS  
Conventional R Value  
2.218**

## Key Features

- SF19 SuperFOIL is independently tested and certified by internationally accredited laboratories to comply with BR443 Part L of Building Regulations for multi-foil insulation.
- Multifoils have Radiant reflective properties, reflecting unwanted heat from solar gain in Summer and enhancing insulation in winter. SF19 also has air barrier properties and can control air movement for further energy efficiencies.
- **SF19 DUET** - an over and under the rafter application of SF19 that gives a U-Value of 0.2; this is the target U - Value in a sloping roof to meet Building Regulations(Pre Oct 2010). SF19 + SF40 gives U 0.16 to exceed regs post Oct 2010
- Combine with existing or any other insulation in a '**COMBI**' configuration.SF19 can be used in a '**COMBI**' configuration with mineral wool, PUR Board or any other insulation product to achieve the required insulation value.
- SF19 is ideal for use in walls and roof structures in new, renovation, refurbishment and extension projects; you can use SF19 in walls without excessive loss of valuable floor space.
- Easy installation results in minimal waste together with the ability to recycle unwanted off cuts.Superfoil is manufactured with 40% recycled content and is recyclable at the end of its useful life.
- SF products are non hazardous with no special requirements for the disposal of waste.

**SF19 – Quality System Manufactured to ISO 9001:2008**

### TECHNICAL SPECIFICATIONS

DESCRIPTION	LAYERS
POLYPROPYLENE REINFORCED HEAVY OUTER LAMINATED FOIL	2
ALUMINIUM COATED REFLECTIVE FOIL PET LAYERS	6
THERMO FOAM SEPARATION LAYERS	8
LOFT QUILT 80G/SQM LAYERS	3
TOTAL LAYERS	19
PACKING	142 Poly Tube

CONVENTIONAL R VALUE	2.218
THICKNESS INSTALLED	38mm
WEIGHT PER ROLL	13kg
DIMENSIONS PACKED	1.5m by 500mm
ROLL DIMENSIONS & sq.m	1.5m x 12.5m/18.75 sq.m

Quality System Manufactured to:

**ISO 9001:2008**

For more information visit [www.superfoil.co.uk](http://www.superfoil.co.uk)



5 060190 230002

SF19 Single Roll